



model: **Clown**
by: **3EyedBear**



MANUAL

————— cut
- - - - - hill-fold
..... valley-fold
1 2 3 4 5 6 7... glue-order

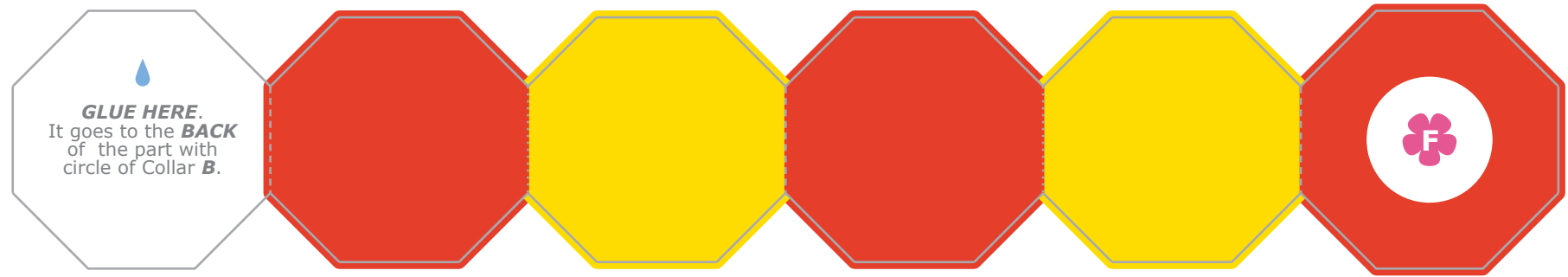
If you cut all the shapes and grease/pre-fold before glueing, the model will look better.

The collar is a 'witches' ladder': glue the ends squared to each other and keep folding over.

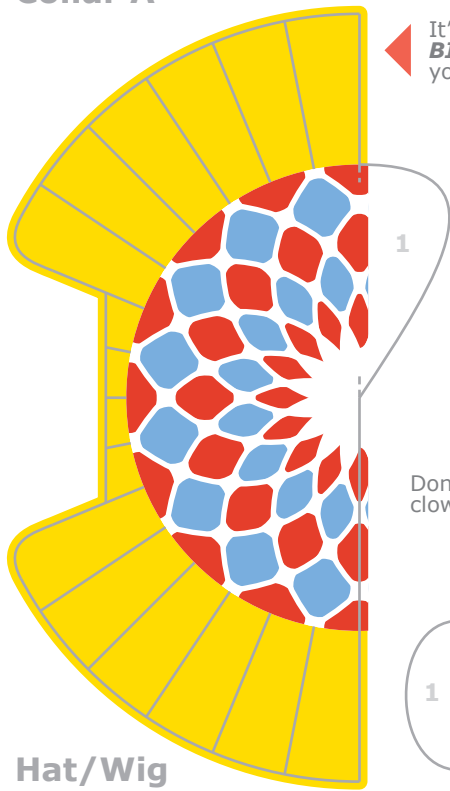


AN URBAN PAPER EXCLUSIVE

visit us
urbanpapercollective.com
facebook.com/urbanpapercollective
#urbanpapercollective

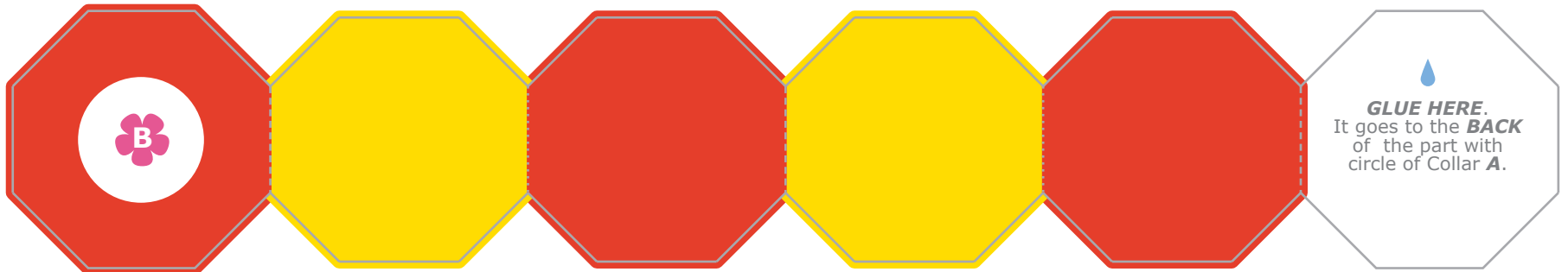


Collar A



Hat/Wig

Collar B



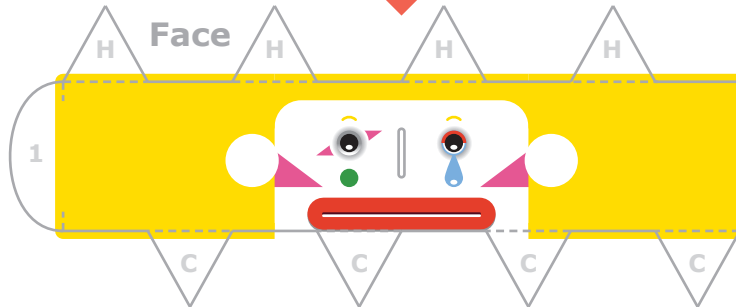
It's nice to curl the hair a **BIT** along the blade of your scissors or ruler.



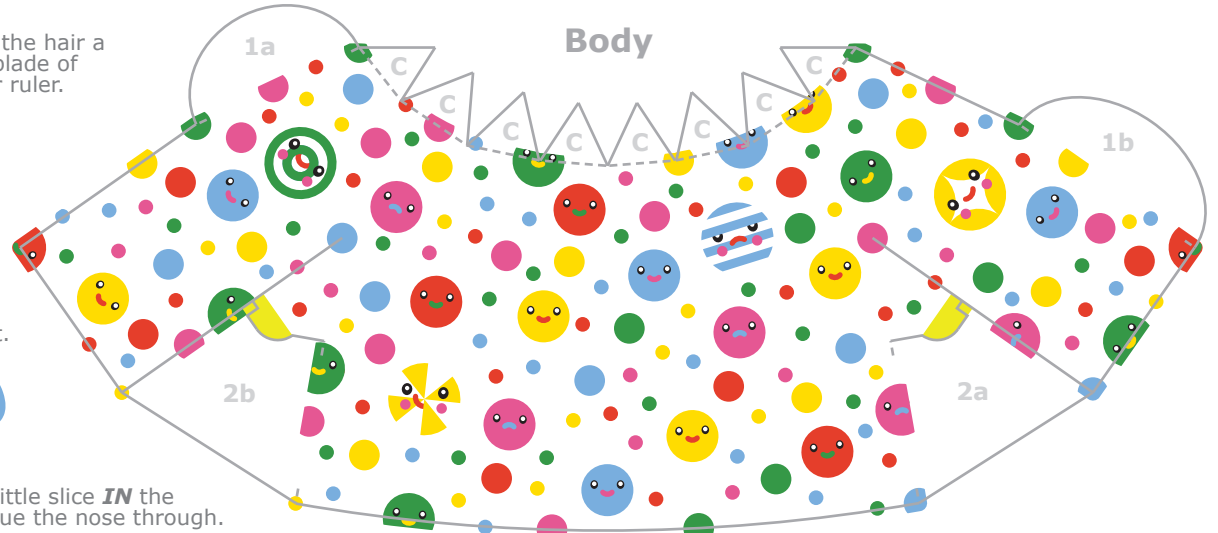
Glue flower to the chest.



Don't forget the little slice **IN** the clown's face to glue the nose through.



Body



Glue the red sides together **BEFORE** glueing into the face.

Nose

